



British Wool – Sale Report

BW191 – 22nd October 2024



KEY METRICS

British Wool price index:	Up 2.4% at 1.480	Total weight offered:	1,124 tonnes
Average clean price:	£1.493 per kg	Total weight sold:	1,107 tonnes
Average greasy price:	£1.009 per kg	Clearance:	98.5%

SALE REPORT

The British Wool sale on 22nd October saw prices strengthen by 2% sale-on-sale with continued strong demand supporting a near full clearance. Bidding was competitive on all core grades and demand was sustained throughout the course of the auction. The only unsold lots were speciality types.

Welsh Mountain and Swaledale both traded ~10% dearer, with Cheviot and Mule types 3% dearer. Romney lots were generally of poor colour which was reflected in the bids. The average greasy price was above £1.00 / kg for the first time since August 2019. On an inflation adjusted basis prices are however still well below pre pandemic levels.

British Wool's supplies are likely to be around 10% lower in the 2024 season than in the 2023 clip year. Of this around 33% has already been sold. Around 50 tonnes of 2023 season wool remains to be sold but this is all in speciality types, predominantly Organic.

The average greasy price of 100.9p per kg was up 3.4% sale on sale. The price index, which is based off clean prices, increased by 2.4% sale on sale. This measure provides a better reflection of the underlying market.

The volumes sold and clearances by wool type were as follows:

Wool type	Weight sold (Tonnes)	Clearance	Price change
Fine	120	100%	Hoggs 2 – 3.5% Dearer, Ewes 1 - 2% Dearer, Ewes 2 - 1% Dearer.
Medium	258	98%	Hoggs 1 – Sellers Favour, Hoggs 2 - 2% Dearer, Ewes 1 – Sellers Favour, Ewes 2 – 1% Dearer, Discoloured – Firm.
Romney	54	100%	Ewes 1 – 3% dearer.
Mule	326	100%	Hoggs 1 – up to 2.5% Dearer, Ewes 1 – up to 1% Dearer, Ewes 2 – up to 3% Dearer, Cott Grades – up to 3% Dearer, Lt Grey – up to 2% Dearer.
Lustre	2	28%	Blueface – Fully Firm
Cheviot	55	100%	Hoggs 1 – 2% Dearer, Hoggs 2 – 1% Dearer, Ewes 1 – fully 2% Dearer, Ewes 2 – 2.5% Dearer.
Cheviot Cross	42	100%	Fim to 2.5% Dearer
Hill	33	100%	Medium – Fully Firm
Blackface	50	100%	Fine 1 – Fully 5% Dearer, No 2 – 4% Dearer, Cotts - 8% Dearer
Welsh Mountain	72	100%	No 1 – 10% Dearer, No 2 – 11% Dearer, Coloured Kempy – 15% Dearer.
Swaledale	24	100%	No 1 – 9% Dearer.
Lamb	30	100%	
Fault, Oddments	45	100%	

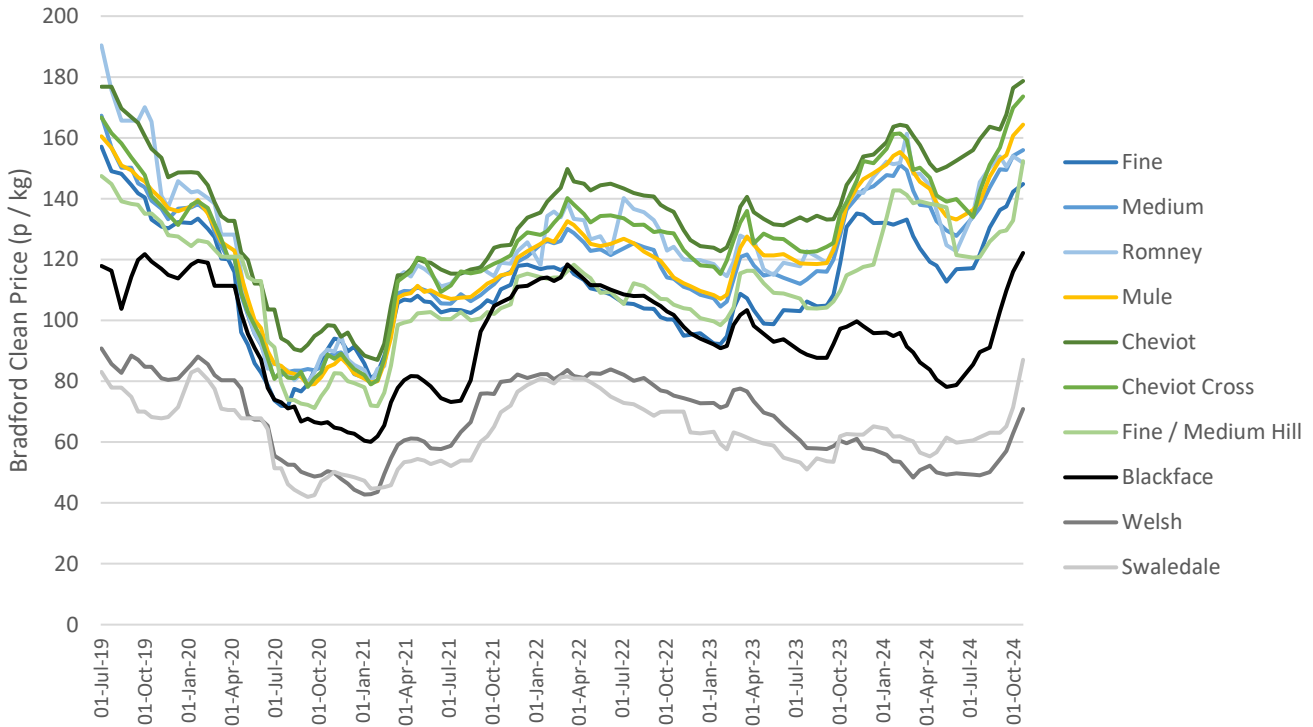


British Wool – Sale Report

BW191 – 22nd October 2024



PRICE MOVEMENTS FOR KEY WOOL TYPES: JULY 2019 TO DATE



PRICE INDEX HISTORY: JULY 2015 TO DATE

